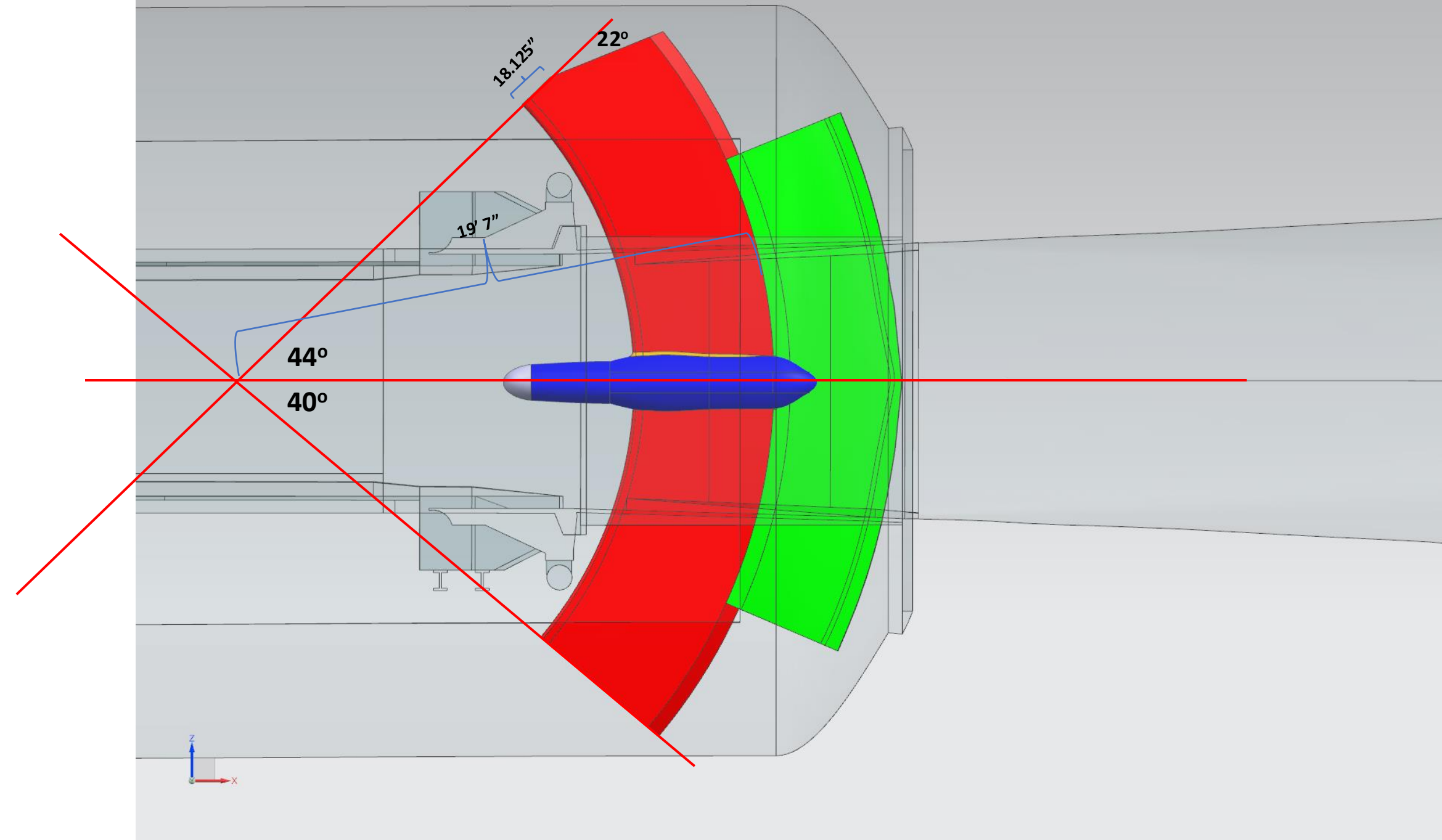


NTF Arcsector Rotation Sketches

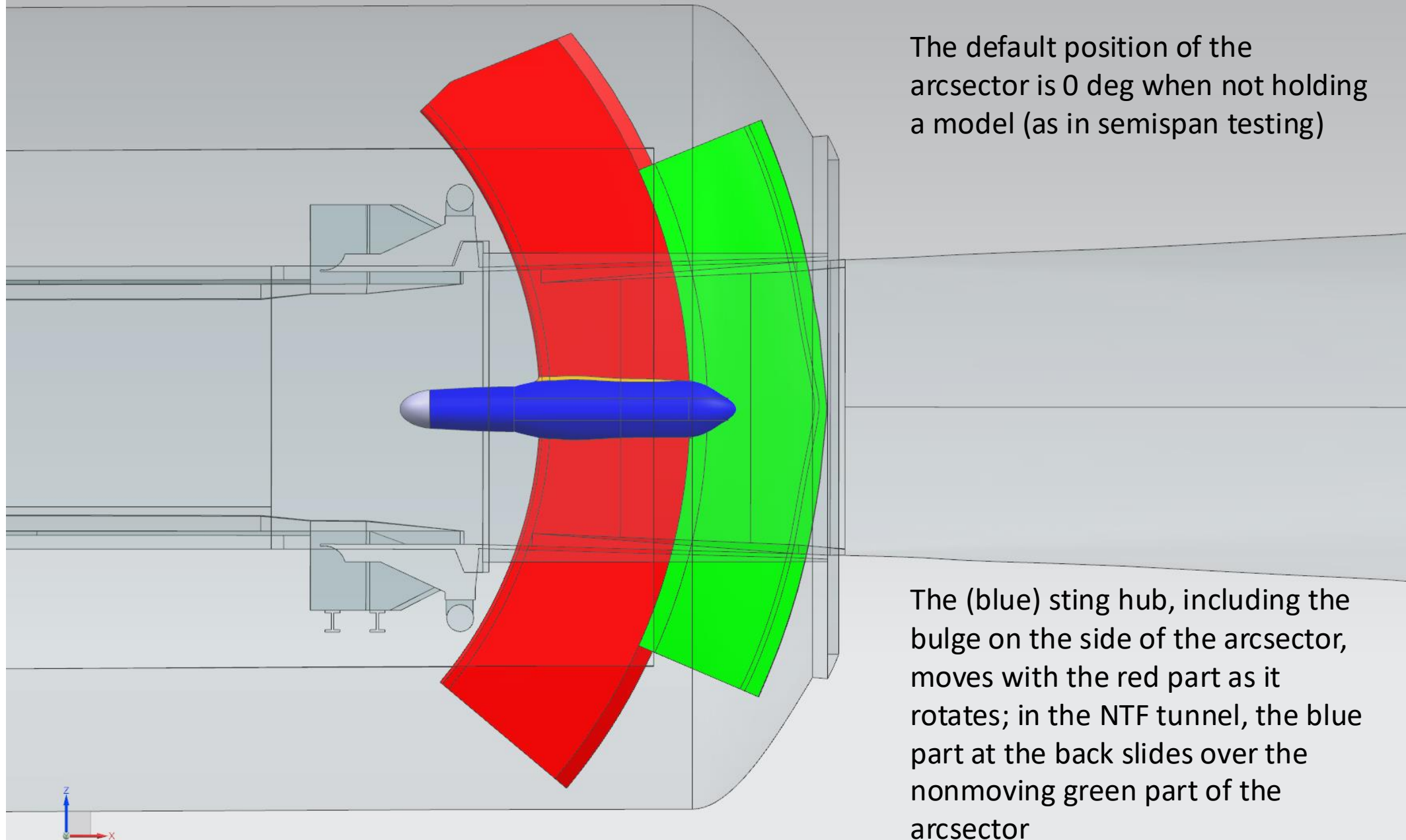
To aid CFD when modeling the tunnel

(This set of slides is part of the NTF high-speed leg CAD package, available for distribution)

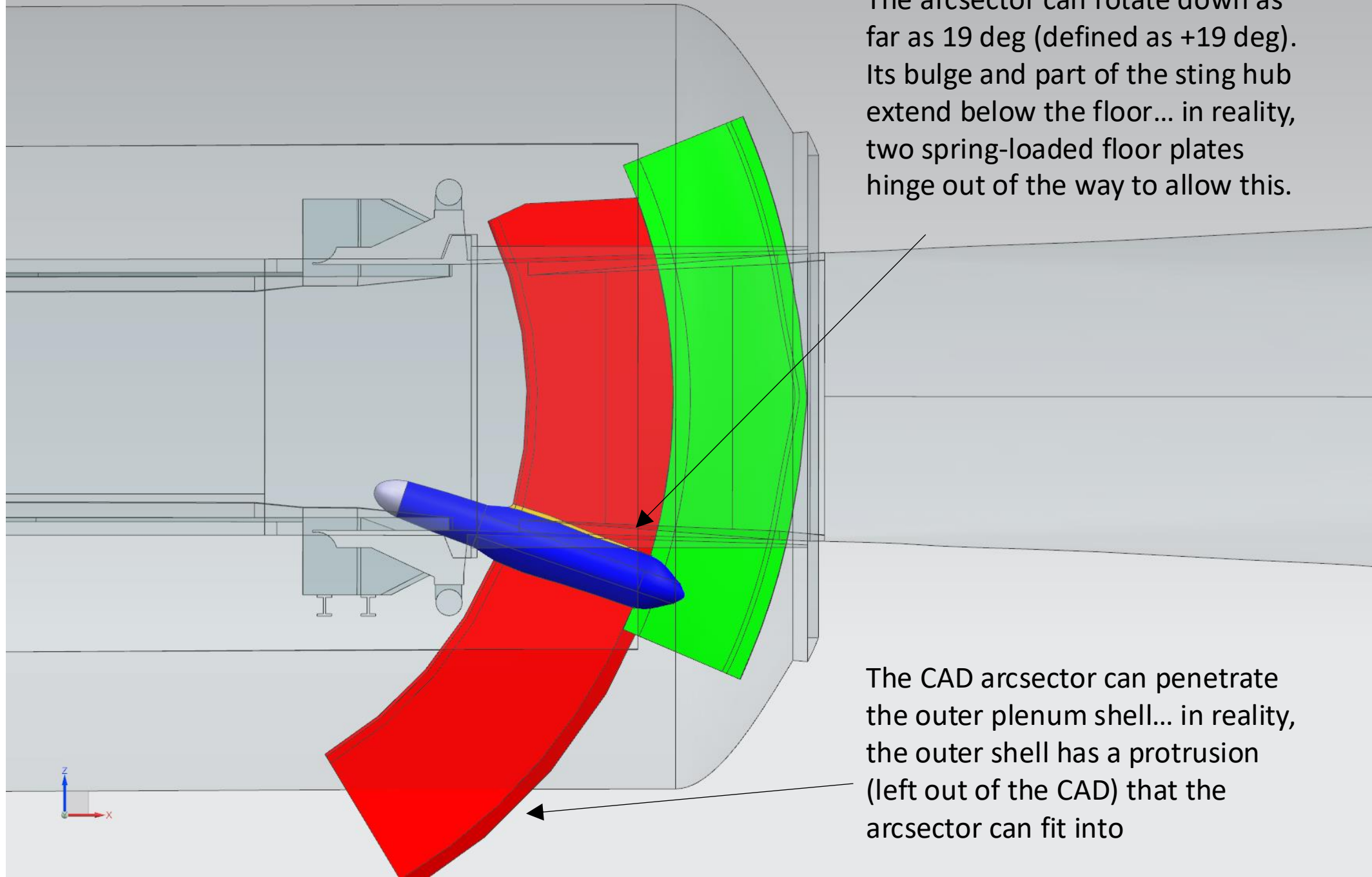
0 deg

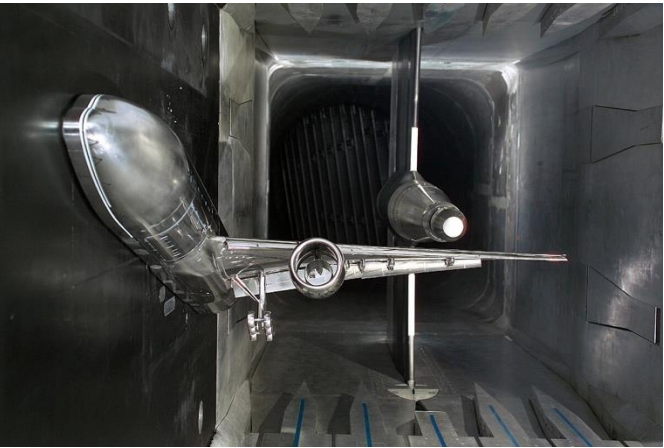


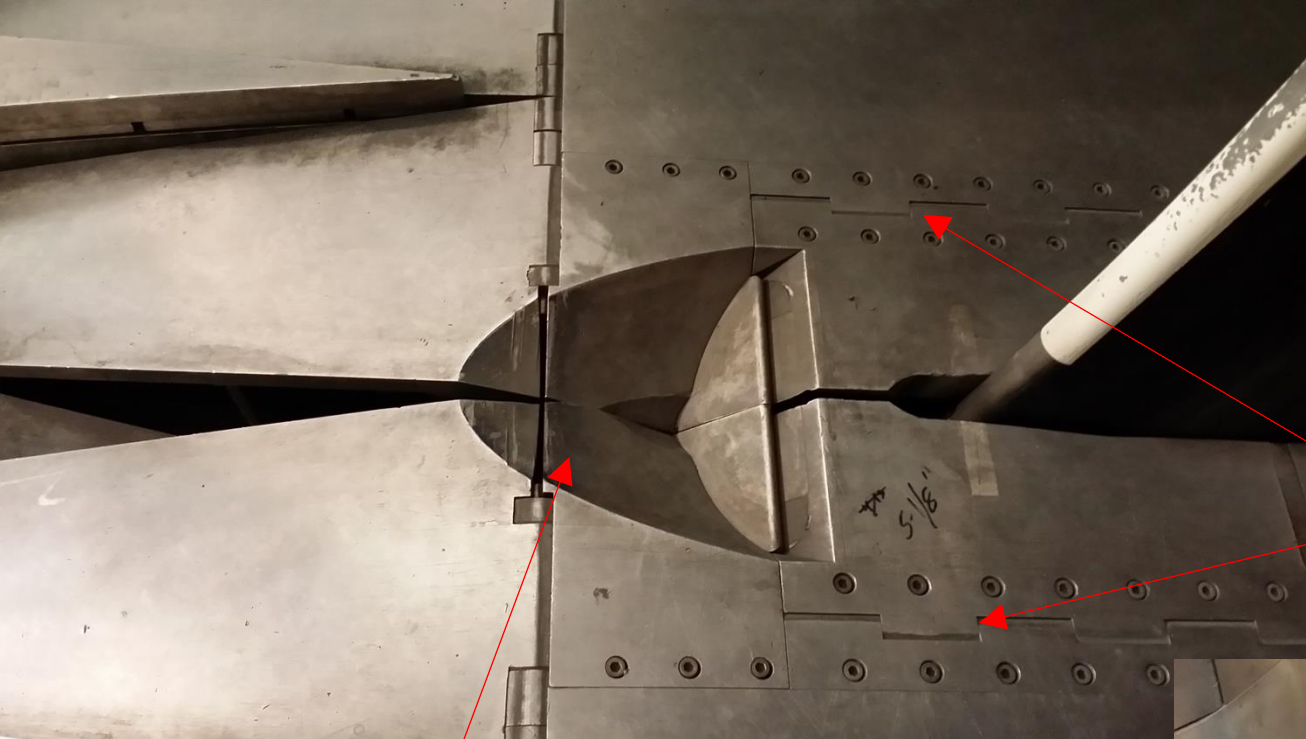
0 deg



+19 deg







Hinges drop the side plates down to make room for the “bulges” on the side of the arcsector to pass through the floor when rotated down

Part of the sting hub nestles in here when rotated down to its maximum 19 deg (this indentation is not included in the current CAD)



-11 deg

